

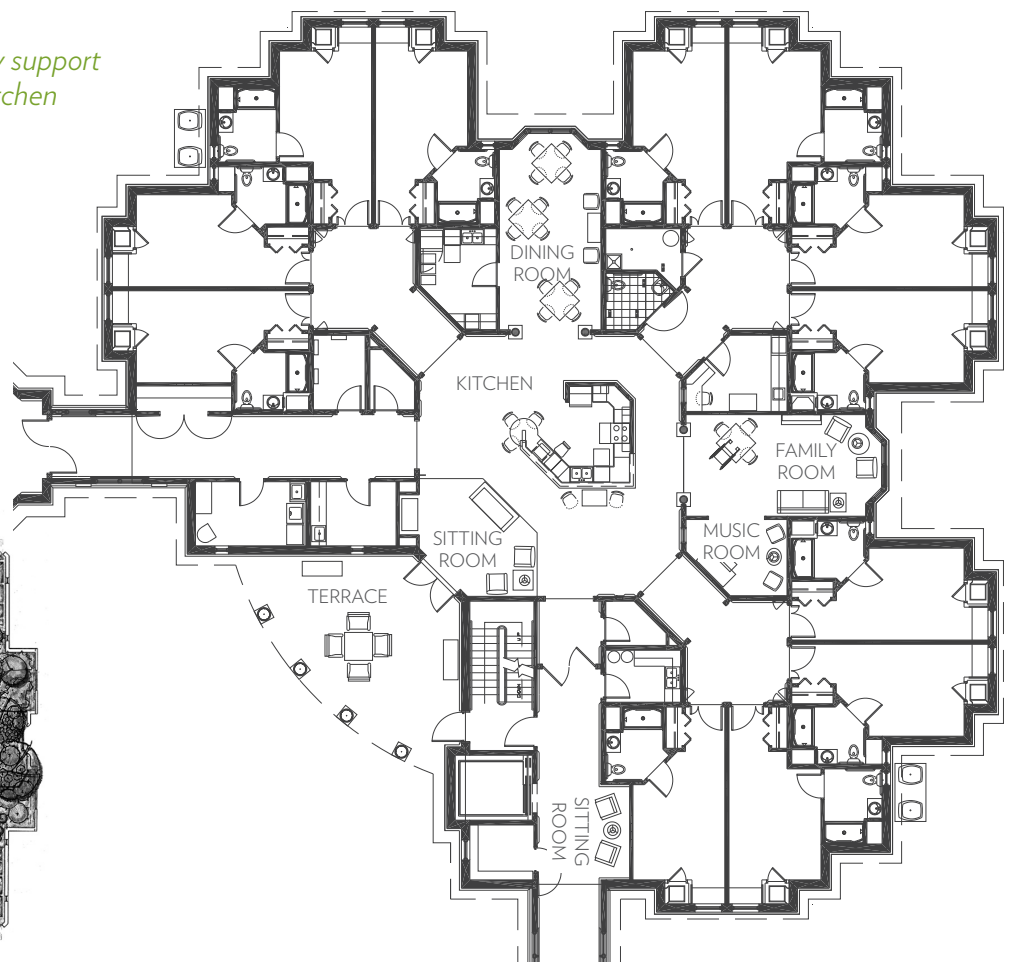
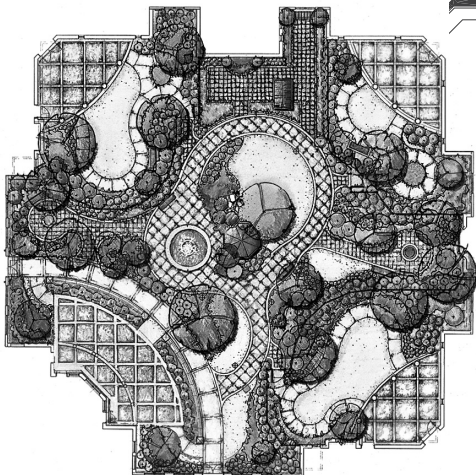
# The Gables & Monticello

## *Innovative Memory Support*

Residences are clustered in households, designed to provide easy monitoring and promote interaction, without sacrificing comfort and privacy. Styled after Virginia's presidential plantations, each household has a distinct look to help residents identify their own home. Fully equipped kitchens serve as care bases. Comfortable family rooms include books, games and pianos. And secured patios and terraces allow access to the outdoors. Each floor has its own intimate dining room and resort-like spa.

*One of six memory support households with kitchen and common areas*

*A restorative courtyard with gardens is central to the memory support center*



See other side for residence floor plans.

*live life well.*<sup>SM</sup>